

Take Self Test print from the printer

Check the default IP in the Print.

IP of the printer must be set to same class as of your computer

First you set the Computer IP address according to the Printer IP address

**Example only for first time configuration:**

Printer IP: 192.168.123.100

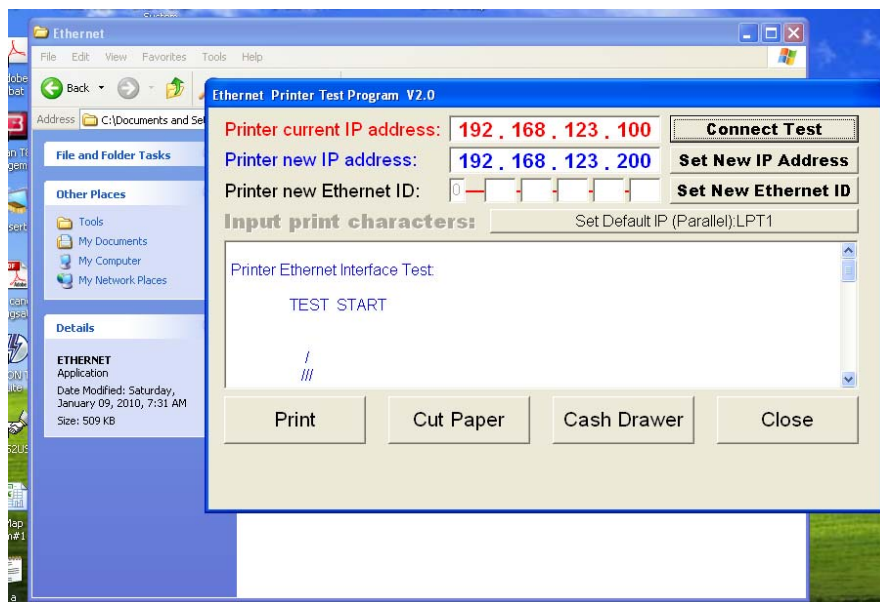
Computer IP should be change accordingly for eg: 192.168.123. (0-254)

The computer and printer IP should be different not the same.

Explore the CD >Tools > Ethernet>

Double click on the File name: Ethernet

He following Screen Appears, Here change the Printer IP according to your organisation Network



Type New IP Address in (Printer New IP Address field) then click the Button Se New IP Address

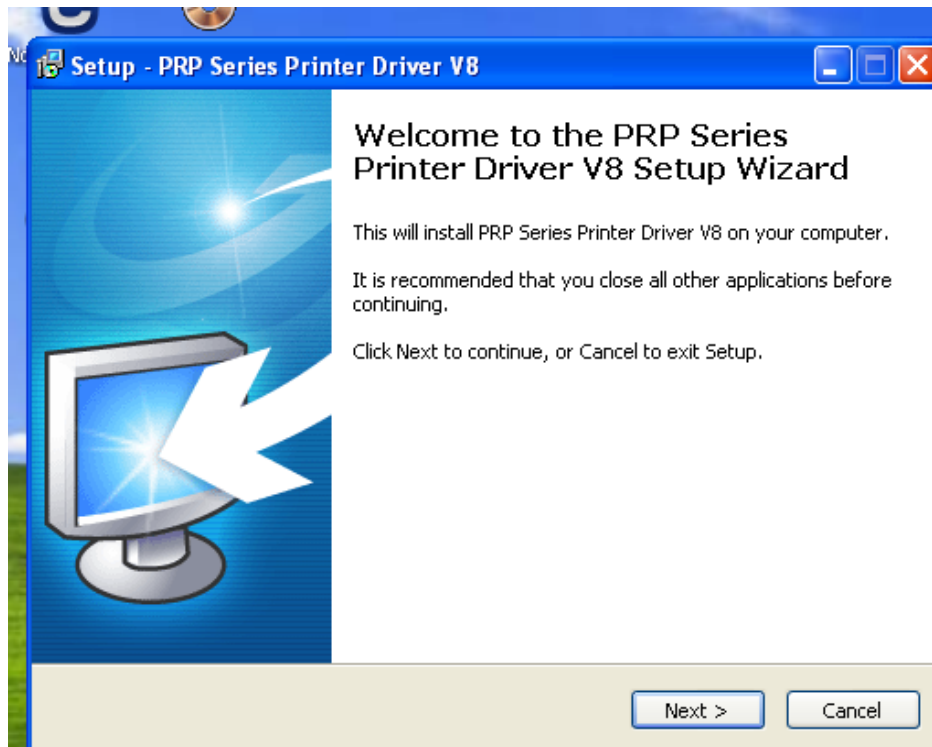
As You Click the Button The Printer give 1 beep and then disconnect from your computer

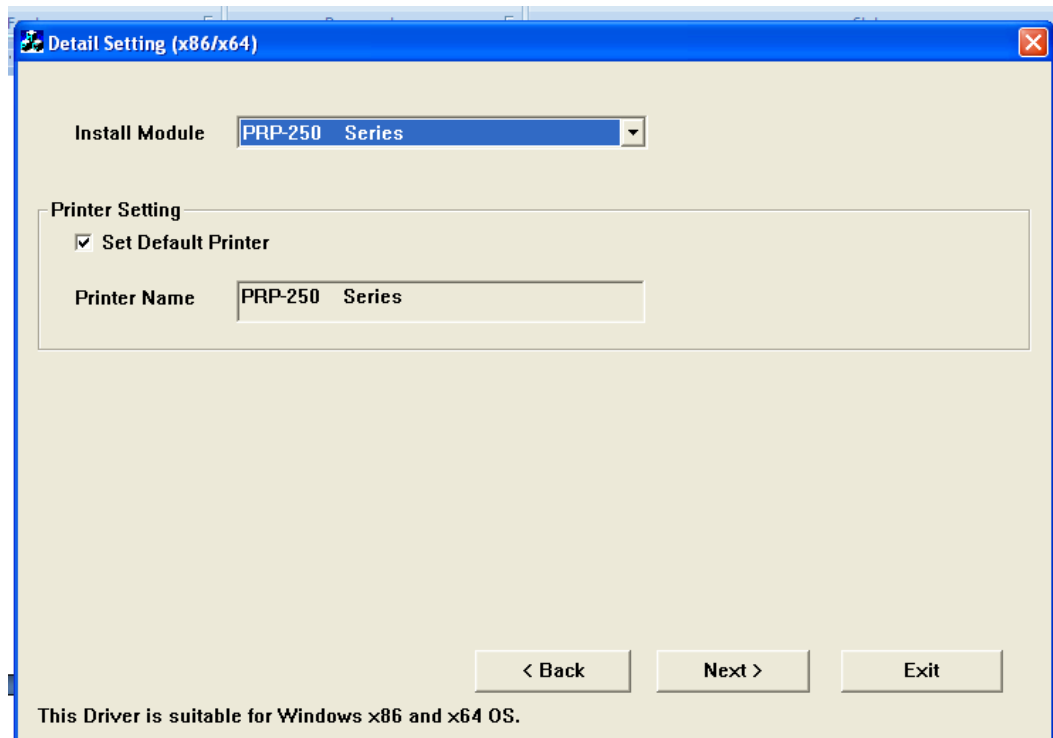
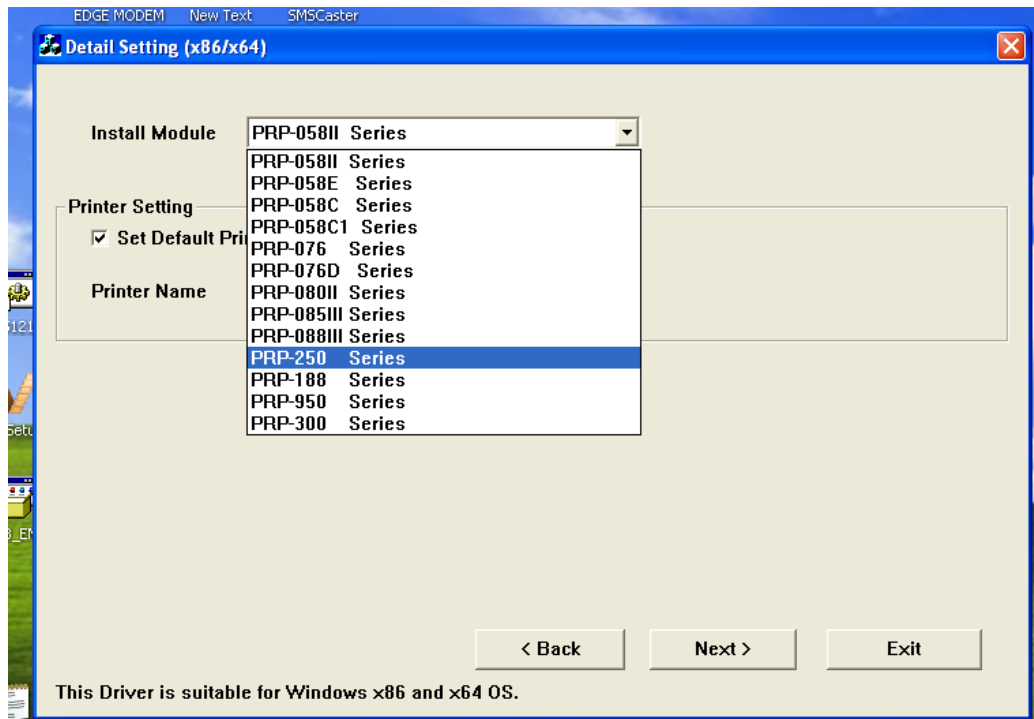
Now take the self Test Print of the Printer, and check if the New IP is configured properly or not,

If Yes, Restore your Computer to the Original IP address according to your organization Network,

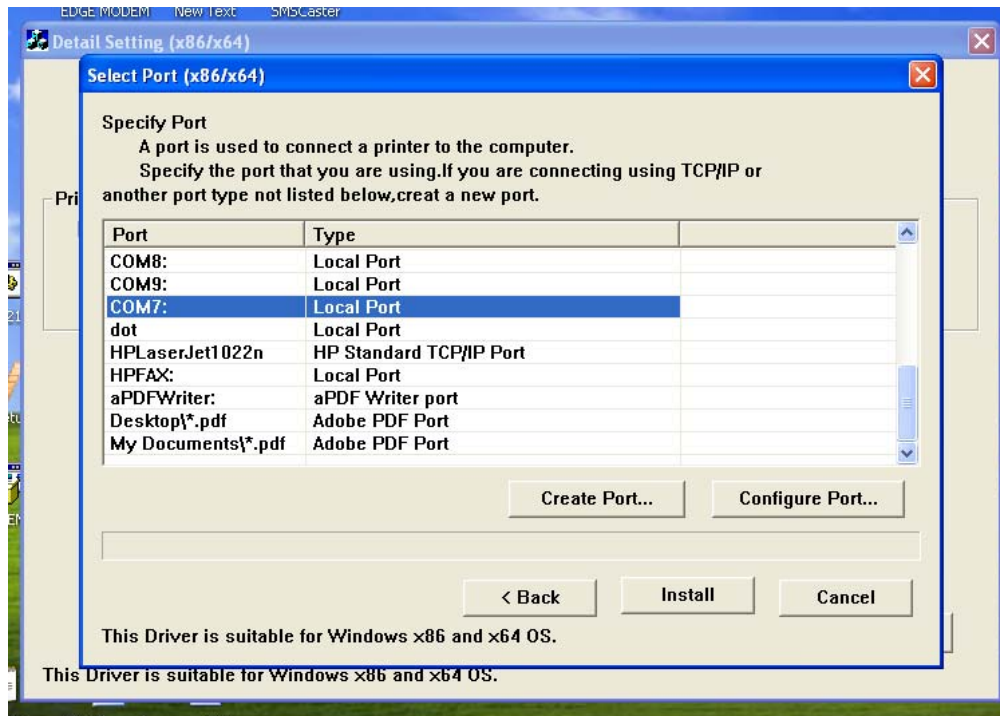
Then open the following folder in CD >Driver> Win2000\_XP\_Vista\_7\_x32x64

Then run the Setup file name: PRPDRVEN V8

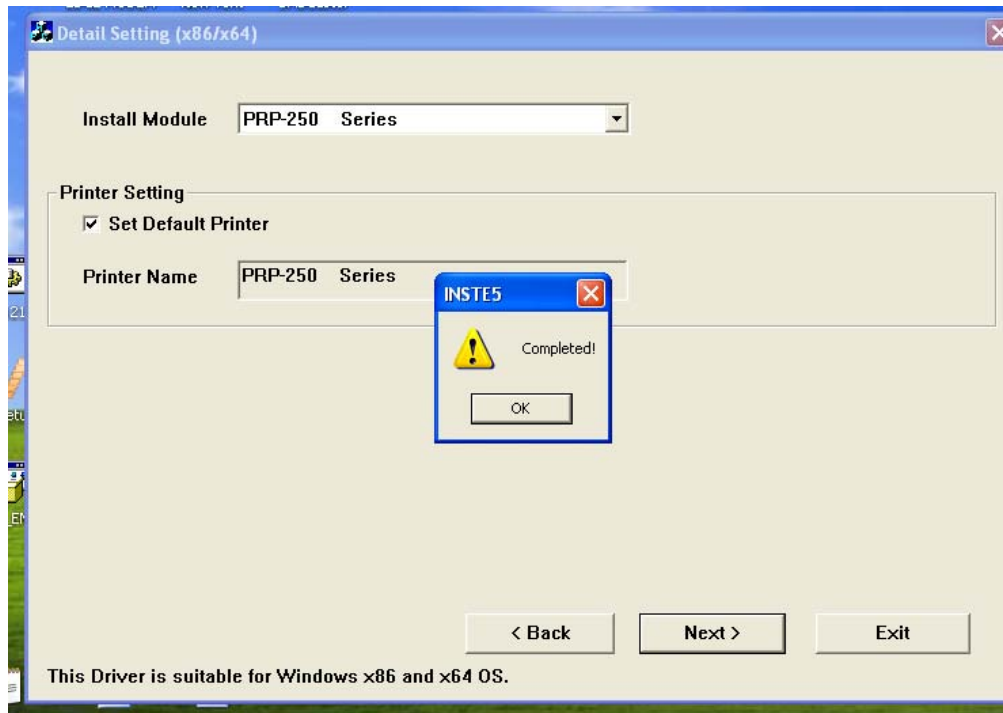




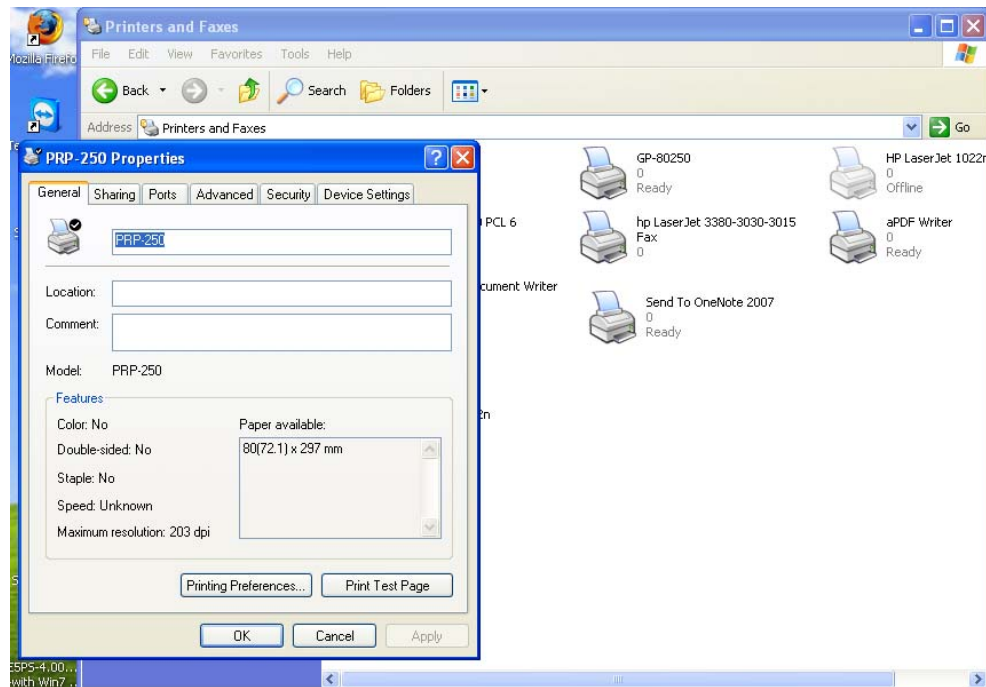
Select the Com Port that you see in device manager that usb driver pic



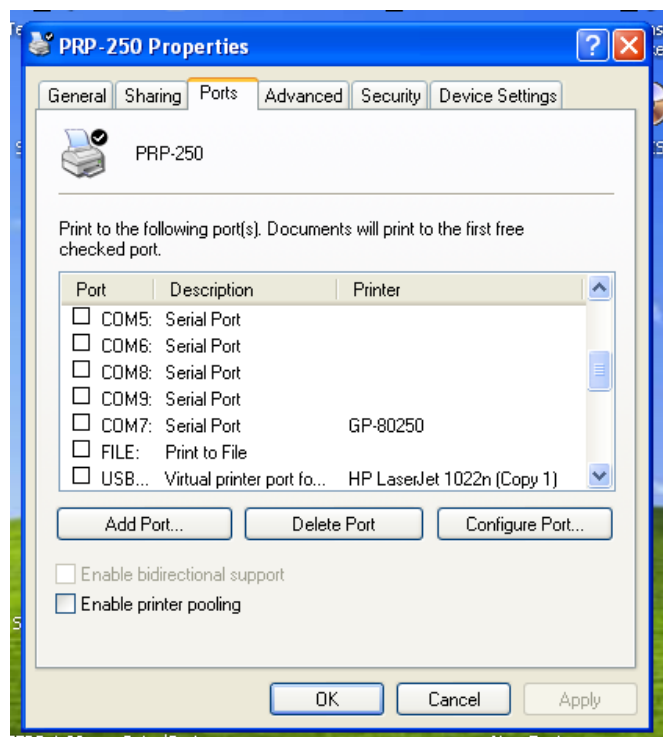
Then Click Install



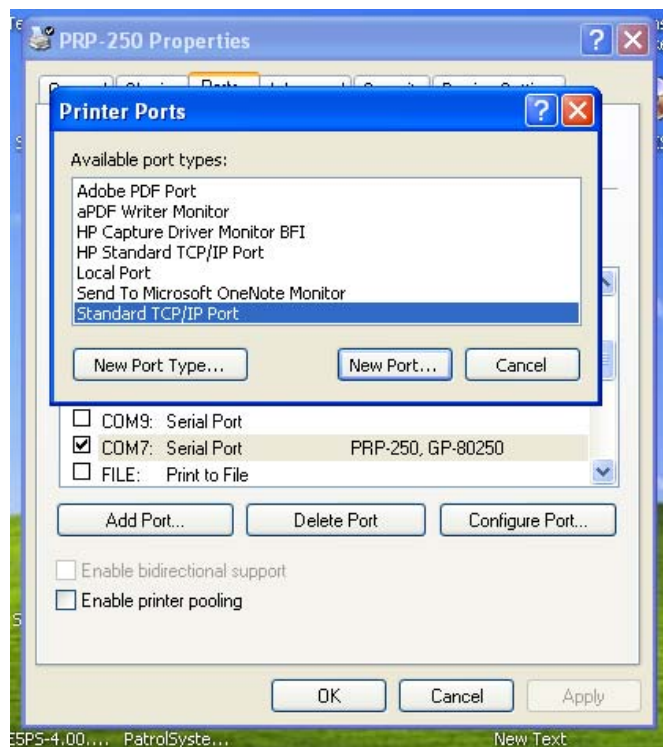
Then go to Control Panel > Printers and Faxes > Right Click on the printer PRP-250 > Select Properties



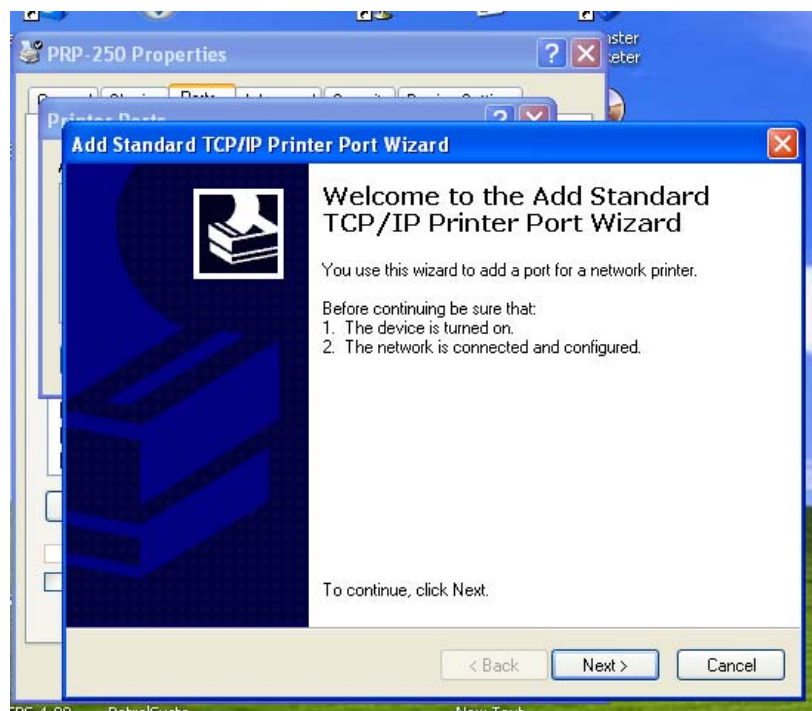
Then Select TAB "Ports"



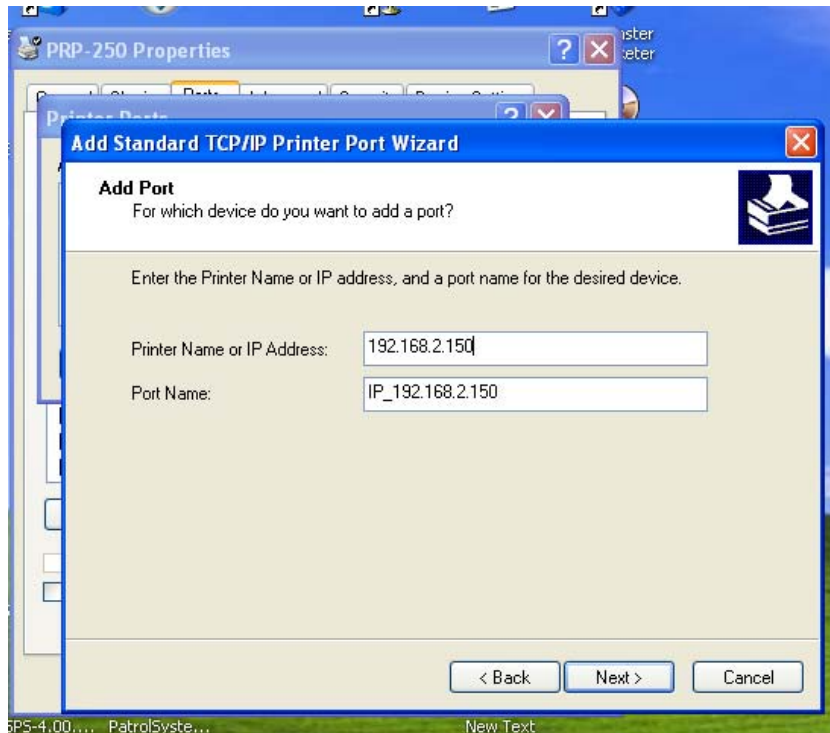
Click on Add Port Button following Screen Appears then Select Standard TCP/IP



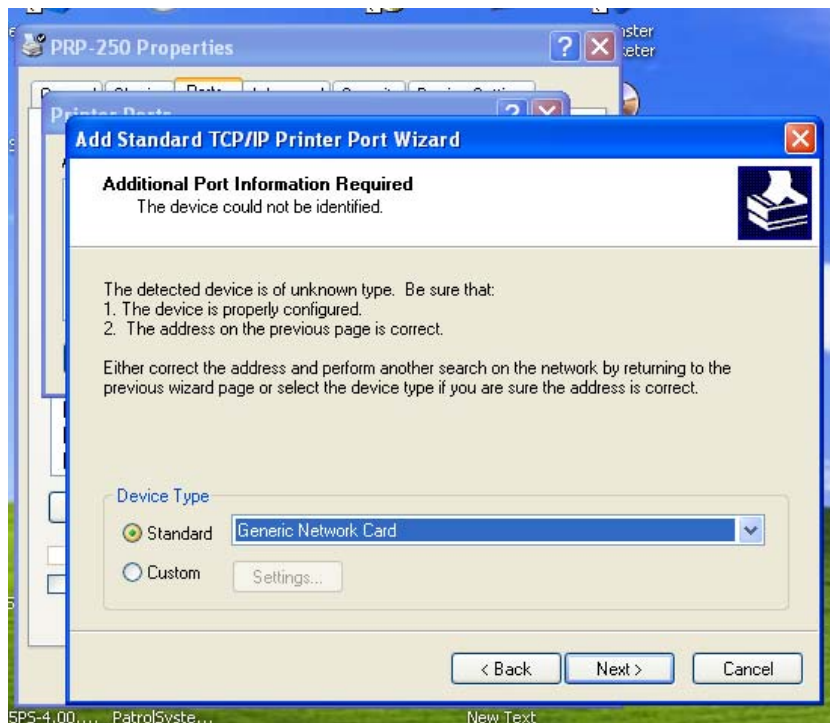
Then Click New Port Button



Type the Printer IP on the following Screen

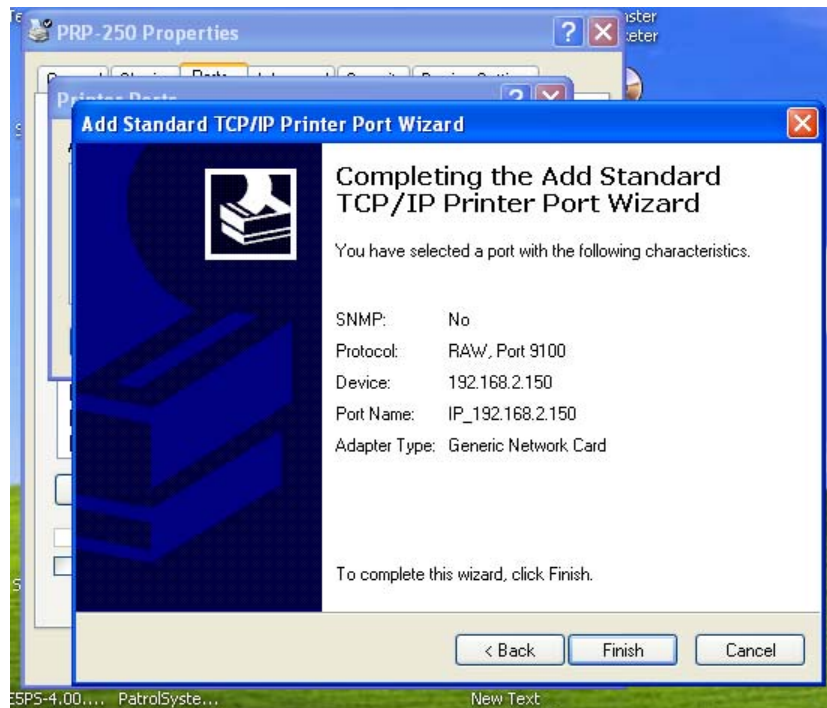


Click Next

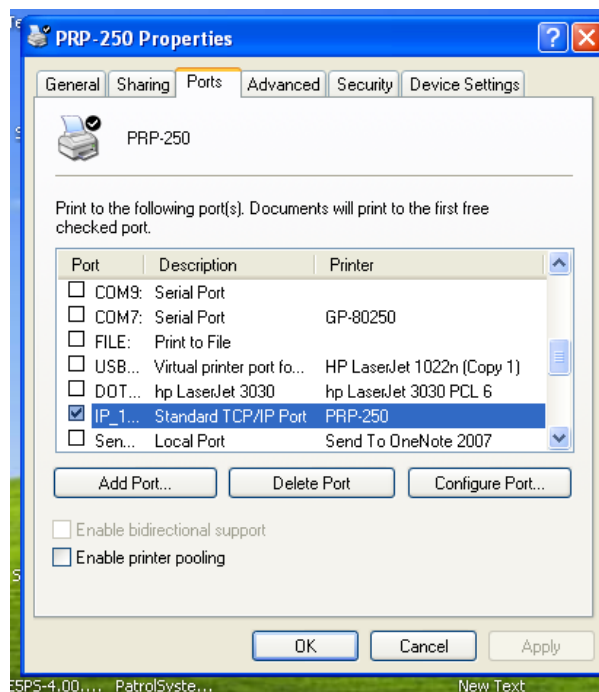




Click Next



Then in Ports TAB Select the IP Port and Click APPLY





Then in GENERAL Tab Click Print Test Page,

Print will Print Windows Test Print.

Installation Complete